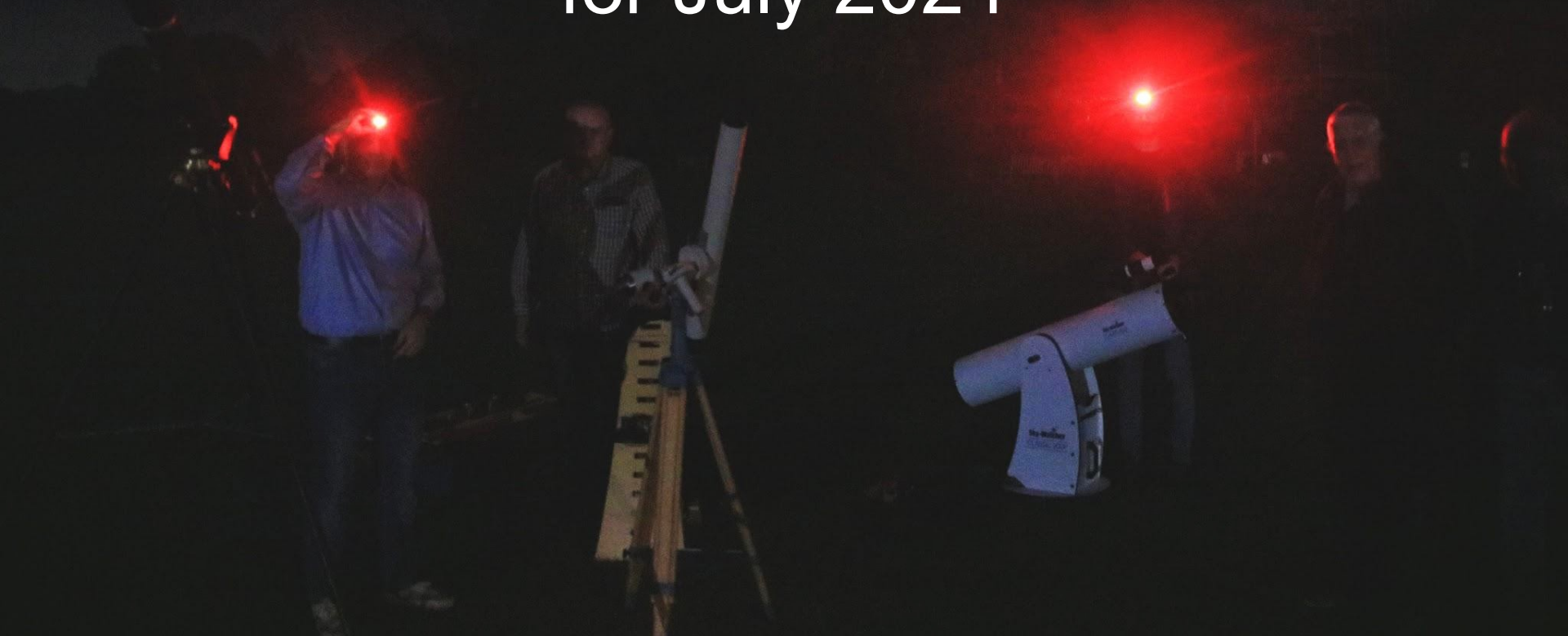




Orpington Astronomical Society

Observing Officer's report for July 2024



Sky chart

1/07/2024

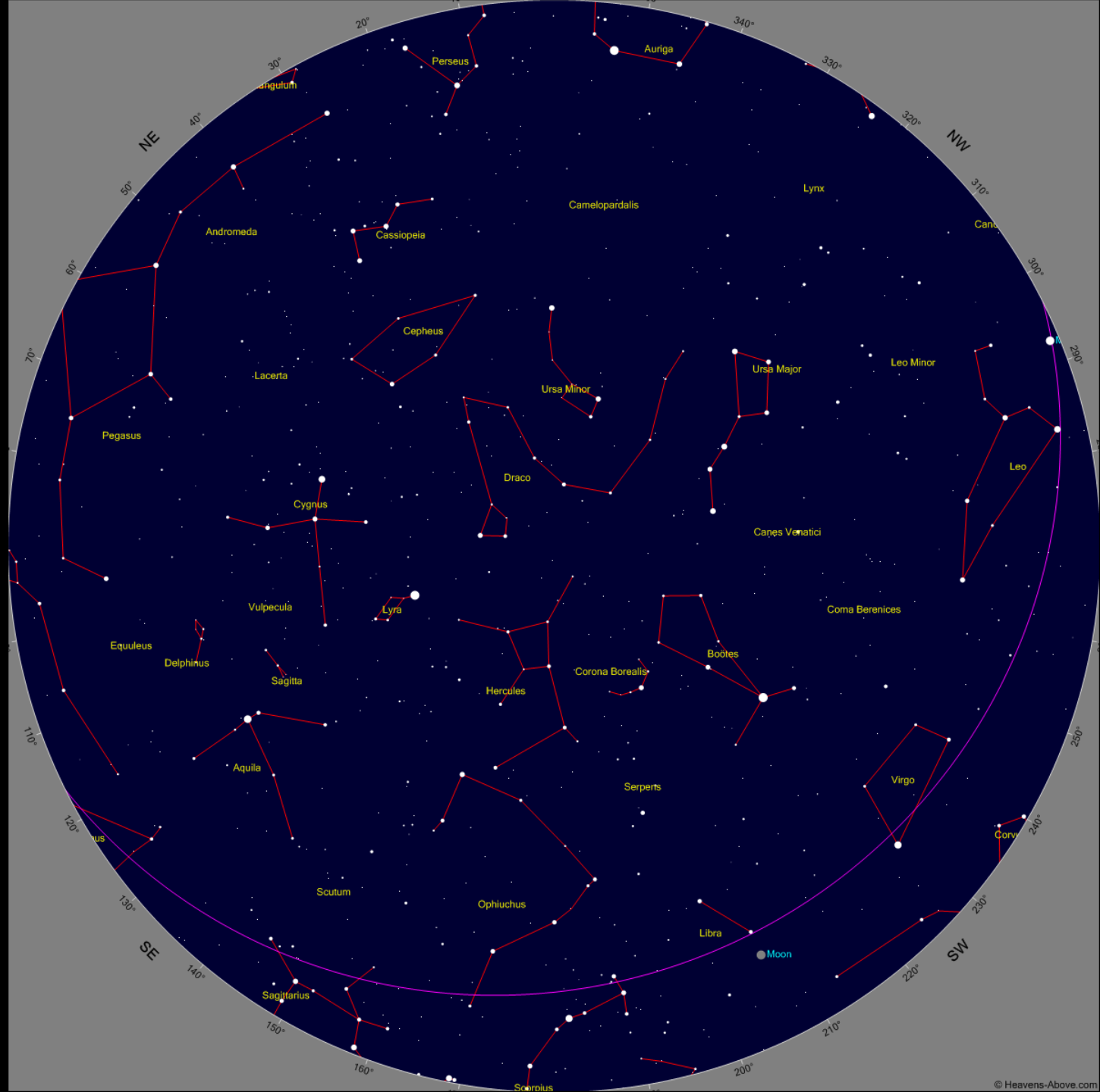
23:00

15/07/2024

22:00

28/07/2024

21:00



Source
<https://heavens-above.com/>

Phases of the Moon

New Moon



5th July
23:57

1st quarter



13th July
23:48

Full Moon



21st July
11:17

3rd quarter



28th July
3:51

Sun Phenomena in July

Date	Twilight starts *)	Rise	Set	Twilight ends *)	Day length
1 st	rest of night	4:47	21:20	rest of night	16:31
15 th	rest of night	5:01	21:10	rest of night	16:09
28 th	2:15	5:18	20:54	23:53	15:35

*) Astronomical twilight

Planets in May

M - Morning sky, before sunrise, E - evening sky, after sunset

Mercury - very difficult to see (E)

Venus - slightly difficult to see (E)

Mars - average visibility (M)

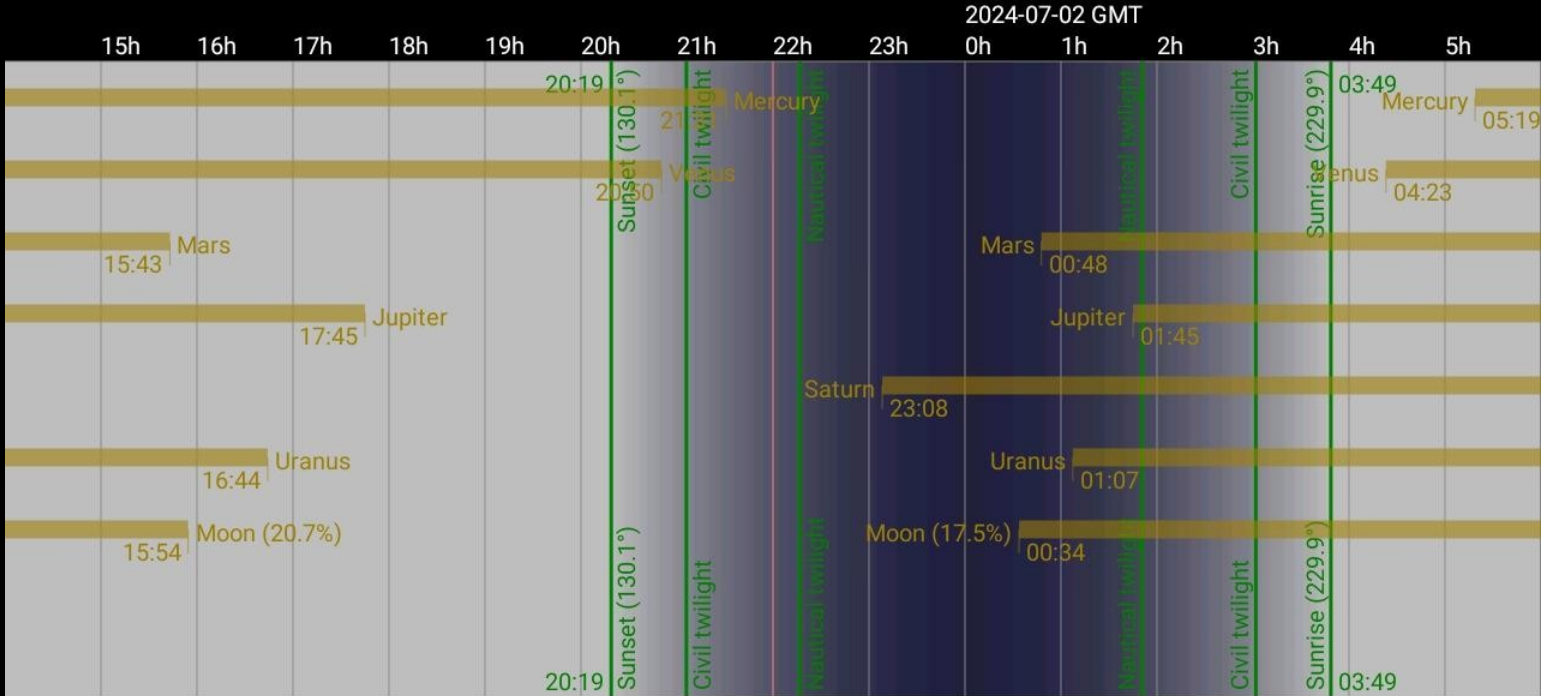
Jupiter - average visibility (M) becoming fairly good

Saturn - fairly good becoming good and then becoming perfect

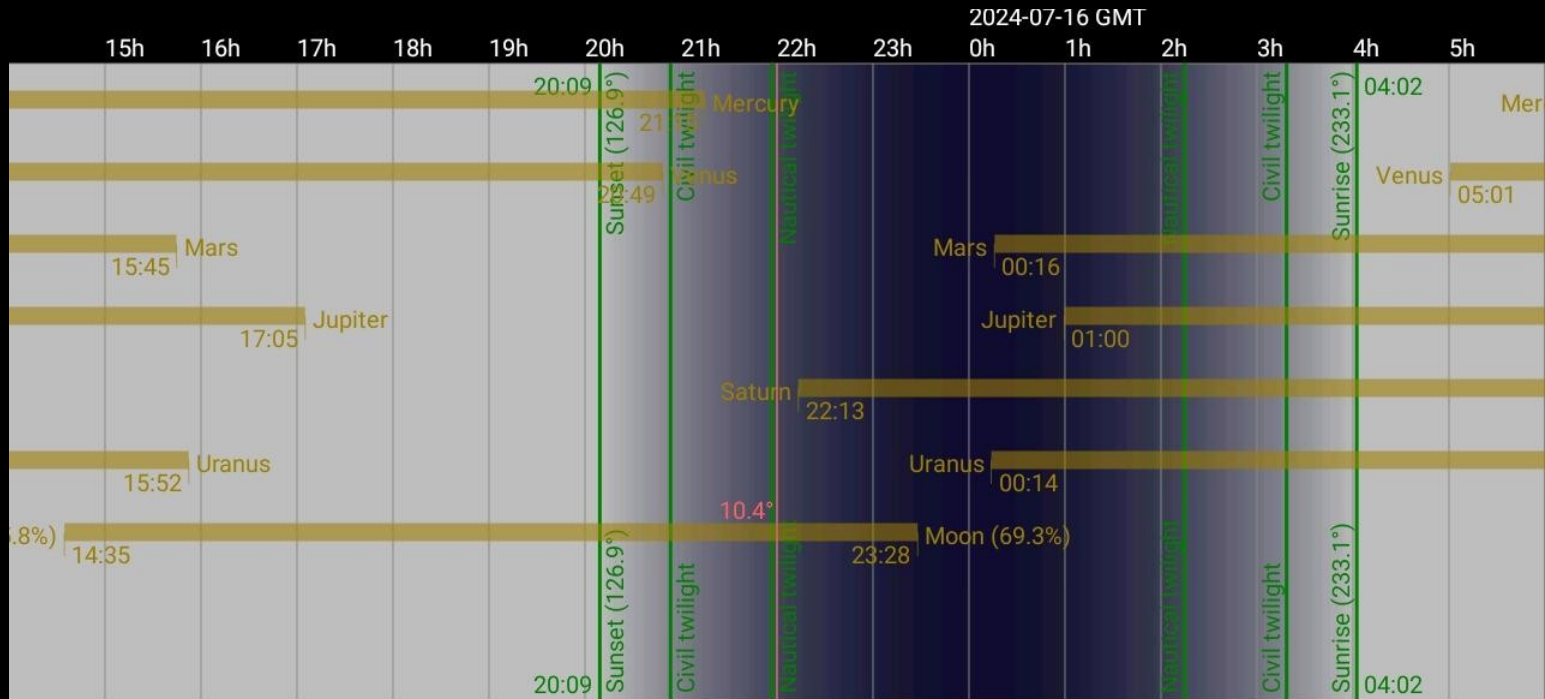
Uranus - difficult to see (M)

Neptune - difficult to see (M)

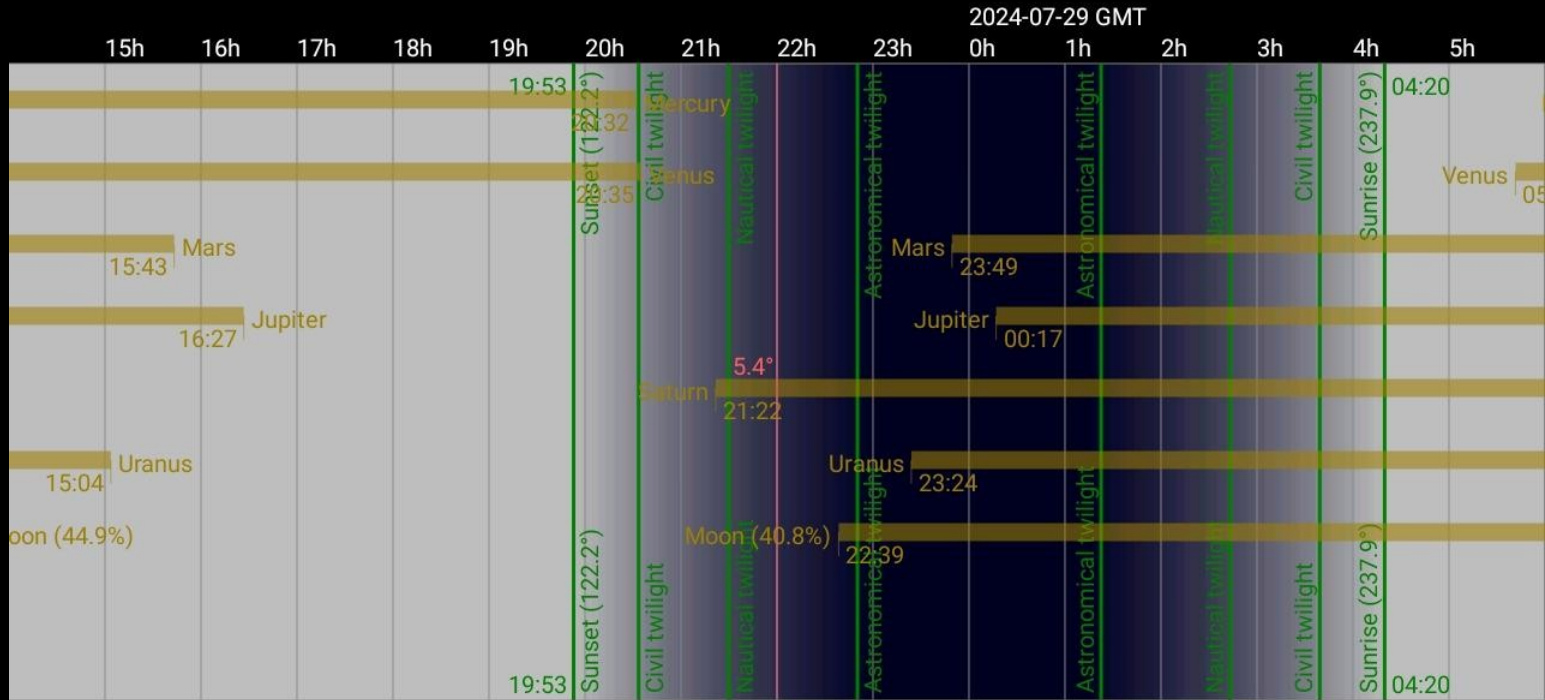
1st July



15th July



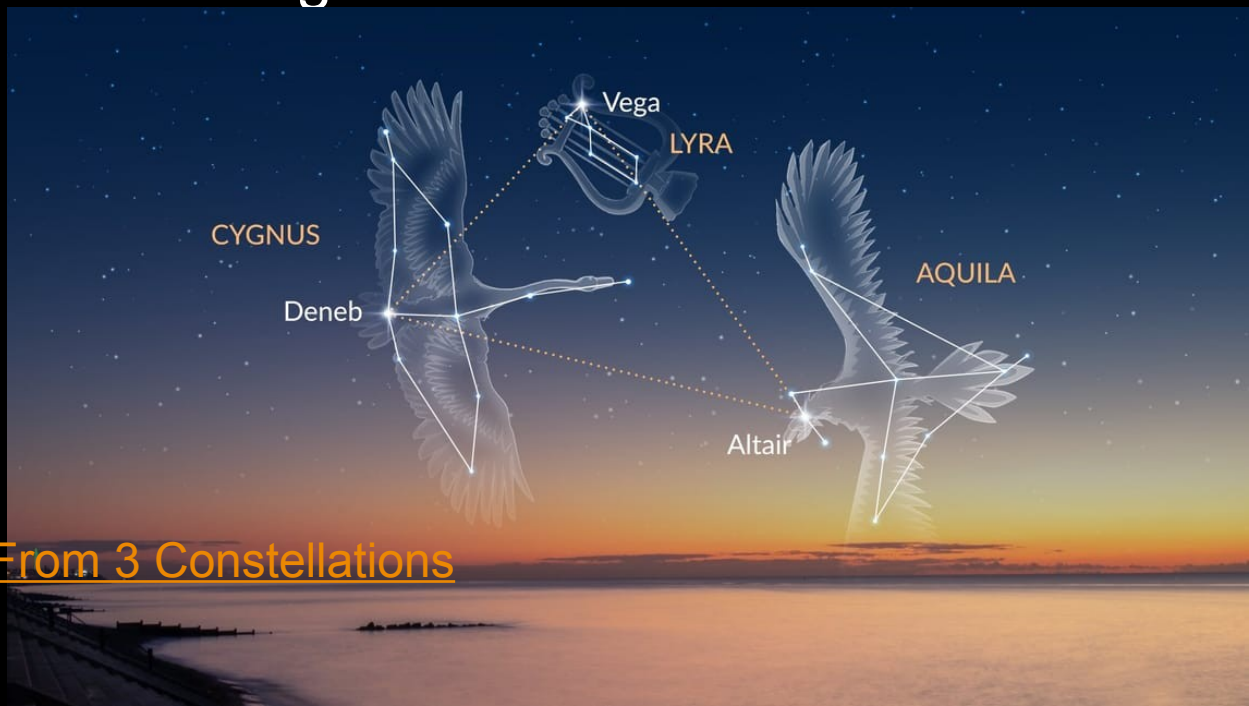
28th July



Selected events:

22 July 06 h: Mercury greatest eastern elongation, possibly visible in the evening on 21st July shortly after sunset and very low above the horizon (21:20, 5° alt)

The Summer Triangle is a prominent star pattern. Its stars (Vega, Deneb, Altair) are so bright that the pattern is visible even on bright summer evenings in the Northern Hemisphere.



Summer Triangle: 3 Stars From 3 Constellations



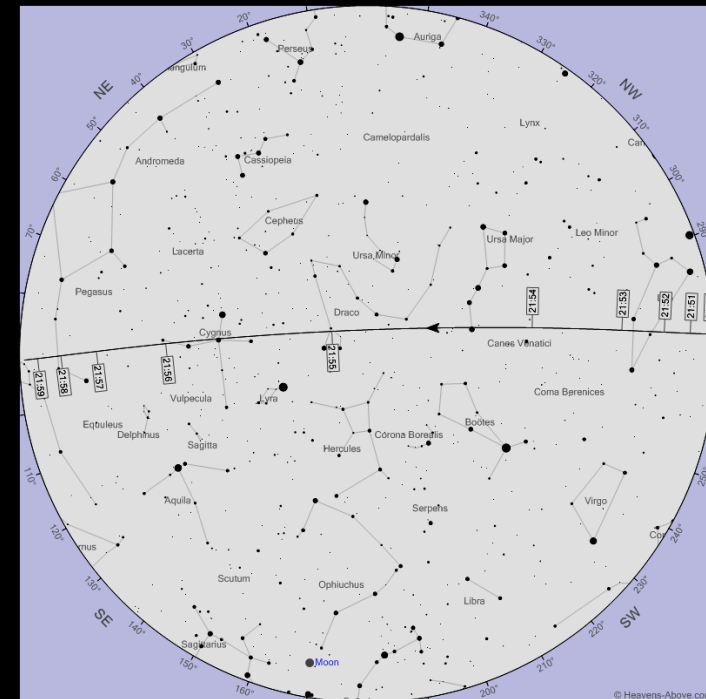
**The next Observing evening will be held here
at the OVMH on Thursday 18th July
at 20:00.**

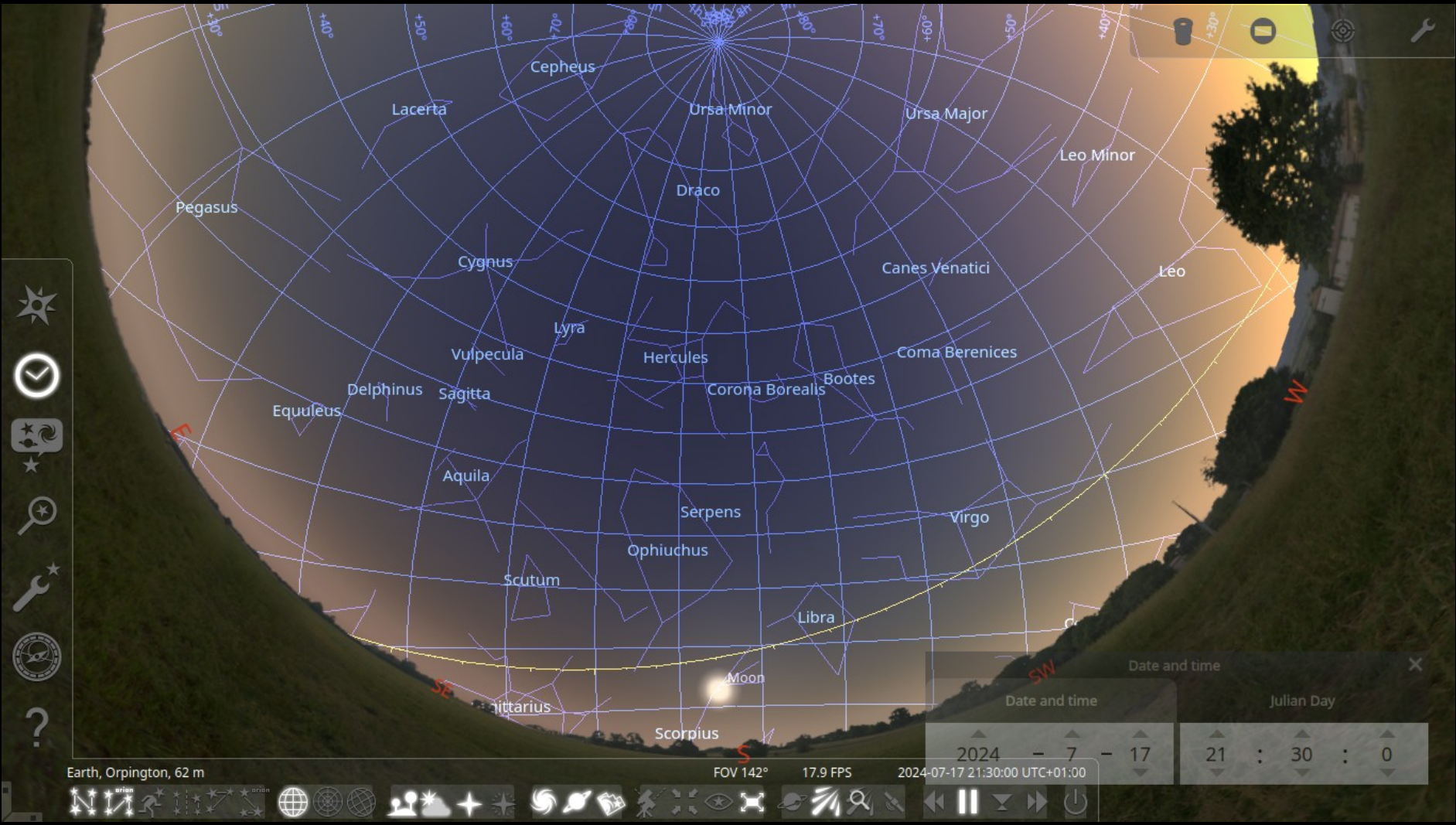
At the observing evening we will be observing:

- Moon (11 days old, 92% lit) rising @19:24, very low above horizon only 8-9°
- Sun (-26 mag, 8° altitude @20:00)
- ISS fly-by between 21:51 and 21:58, max -3.7 mag

Sunset 21:06

Astronomical twilight: —





Top navigation bar containing icons for a mobile device, a window, a target, and a wrench.

Left sidebar containing icons for a star, a checkmark, a star with a swirl, a magnifying glass, a wrench, a globe, and a question mark.

Star map labels including: Cepheus, Lacerta, Ursa Minor, Ursa Major, Leo Minor, Pegasus, Draco, Canes Venatici, Léo, Cygnus, Lyra, Hercules, Coma Berenices, Delphinus, Sagitta, Corona Borealis, Bootes, Equuleus, Aquila, Serpens, Virgo, Scutum, Ophiuchus, Libra, and Scorpis. A yellow line representing the ecliptic is visible across the map.

Date and time selection dialog:
Date and time: 2024 - 7 - 17
Julian Day: 21 : 30 : 0

Earth, Orpington, 62 m

FOV 142°

17.9 FPS

2024-07-17 21:30:00 UTC+01:00

Bottom toolbar containing various icons for navigation, zooming, and other application functions.

Informal meetings

Informal meetings should return in September.



OAS merchandise

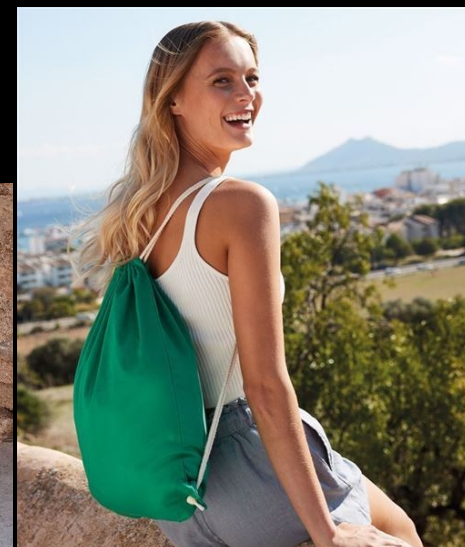
Show your interest in astronomy by buying
an OAS mug, t-shirt, cap or fleece

Place orders with Raf, Rose or Andrew



OAS merchandise

Fleece (navy).....	£19
T-shirt (navy/white).....	£12
Polo shirt (navy/white).....	£15
Mug.....	£5
Baseball cap (navy).....	£9
Beanie hat (navy).....	£9
Insulated beanie hat (navy).....	£15
NEW microfibre golf towel (40 x 55 cm, clip hook, navy)....	£9
NEW microfibre travel towel (90 x 40 cm, charcoal grey/black).....	£7
NEW cotton bag (37 x 46 cm, 12 litres, French navy).....	£6



Thank you

